

Double **f**, **l**, **s**, and **z** at the end of a one-syllable word, after a short vowel.



B **u** **zzz**


o **fff**

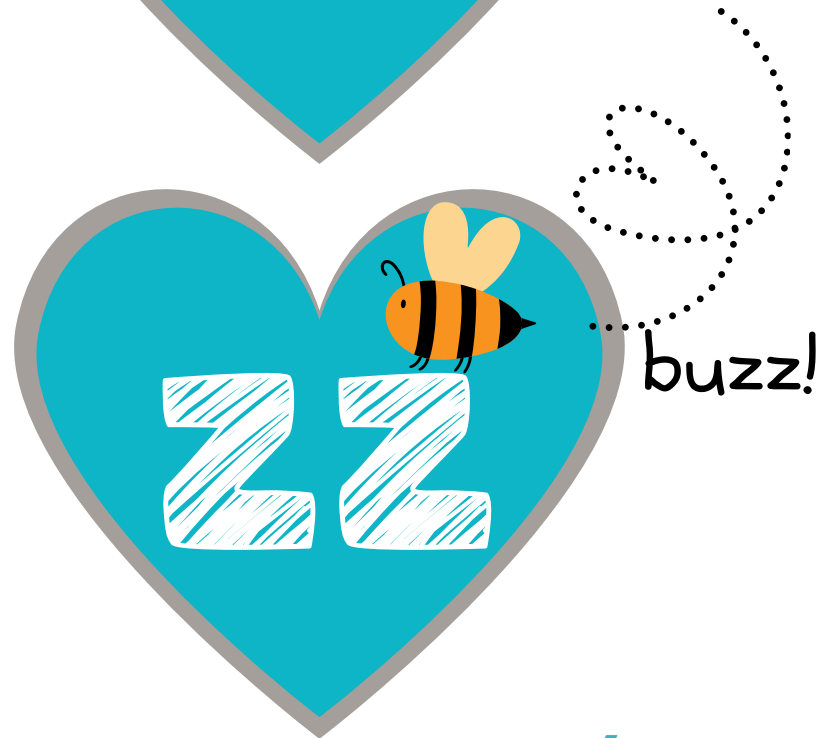
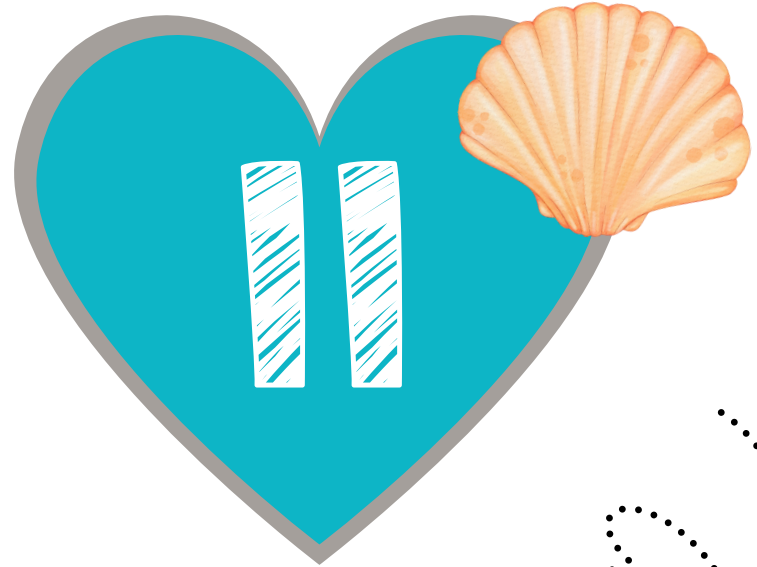
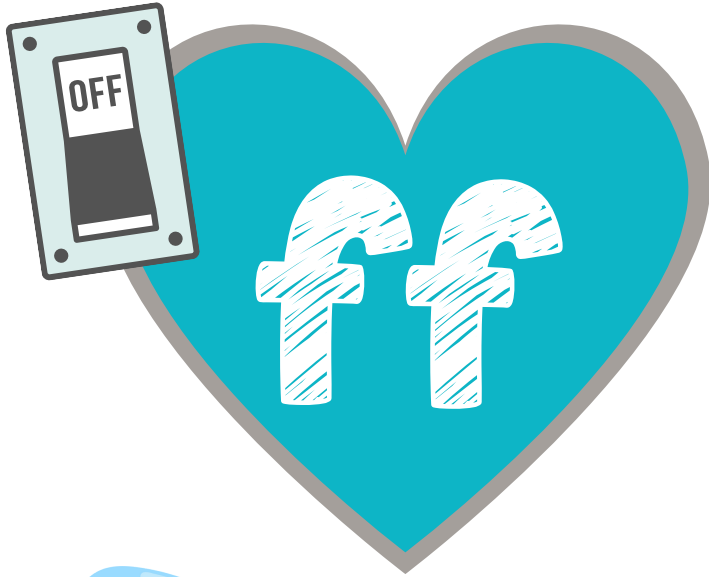
M **i** **sss**

H **i** **lll**



SLANT / SYSTEM™

 **f, l, z, and s** all have BFFs at the end of a one-syllable word, after a short vowel!



At the end of a one-syllable word,
after a short vowel, **f, l, s, z** are doubled.

-ff

buff fluff
cuff stuff
off bluff
riff scuff

-ll

fell dwell
hill spill
bell still
mall shell

-ss

bass floss
miss class
pass press
kiss glass

-zz

buzz whizz
fizz frizz
jazz fuzz
razz swizz